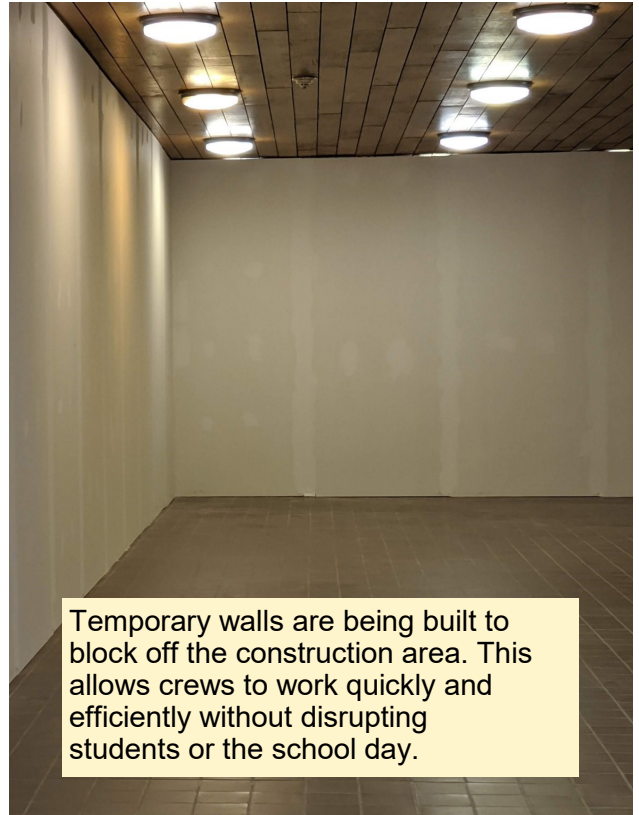


Phase 2 of the Capital Construction Project Continues at Middle School



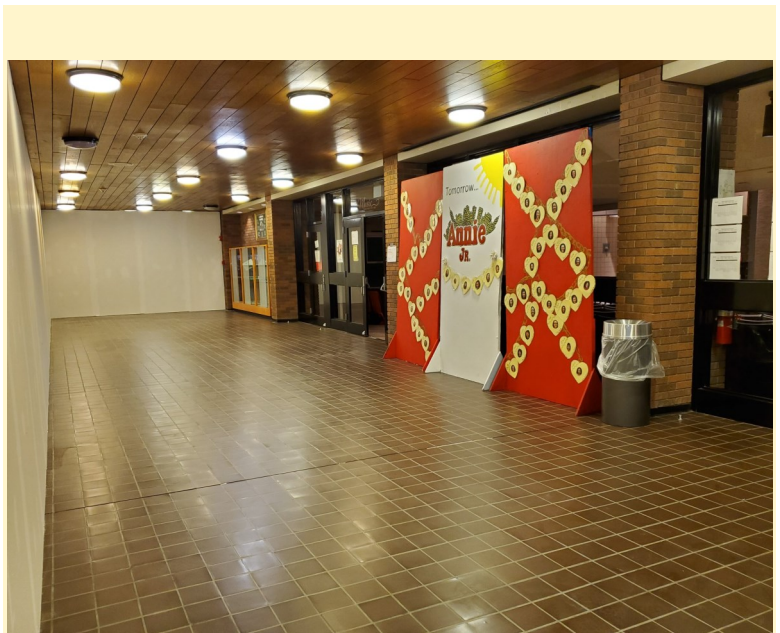
The front entrance of the Middle School is closed for construction. Crews are working on renovating the Main Entrance. When work is completed, the Middle School will have a secure entry area.



Temporary walls are being built to block off the construction area. This allows crews to work quickly and efficiently without disrupting students or the school day.



Insulation in the temporary walls helps to reduce construction noise and allow crews to work quietly throughout the day.



Temporary walls surround the Middle School Auditorium Lobby. This allows students and families to enjoy productions like the upcoming Annie JR. without being exposed to an open construction zone.

Phase 2 of the Capital Construction Project Underway at High School

Temporary safety fencing was put up behind the High School surrounding the construction area. This ensures crews have the space and security they need to work.



Crews are scraping surface soil behind the High School in preparation for building an addition that will include technology classrooms and additional instruction areas, an athletic entrance with concession area, and indoor restrooms for athletic events.

